



Highly Advanced Sensor & Optics

IR3 Flame Detector
RFD-3000X

SPECIFICATION	
General	
Spectral Response	Triple IR Bands
Detection Range	197ft(60m) for n-Heptane fire
Field of View	Horizontal 90° Vertical 90°
Response Characteristics	Typical 5 seconds
Temperature Range	Operating : -40°C to +75°C. Storage : -50°C to +80°C.
Humidity Range	0 to 95% relative humidity
Electrical	
Operating Voltage	Typical DC24V (18 to 30)
Power Consumption	4.8W maximum at 30 vdc
Wiring	14AWG(2.08mm ²) to 24AWG(0.205mm ²) shielded cable recommended.
Electromagnetic Compatibility	EMC Protected
OutPut	
Relays	<p>Fire Alarm: - Form A or B Selectable - Normally de-energized - Latching/Non-latching. - Contacts rated 3A at 30 VDC</p> <p>Fault Alarm - From A - Normally Energized - Contacts rated 3A at 30 VDC</p> <p>Warning Alarm : - From A - Normally De Energized - Contacts rated 3A at 30 VDC</p>

SPECIFICATION	
OutPut	
4-20mA	A maximum loop resistance of 400 ohms
	<p>General Fault : 0mA +0.5mA Self Test Fault : 2mA ±0.5mA Normal : 4mA ±0.5mA Warning : 16mA ±0.5mA Alarm : 20mA ±0.5mA</p>
RS-485	Proprietary communication
Mechanical	
Dimensions	W134 x H117 x D112 mm W5.3 x H4.6 x D4.3 Inch
Enclosure Material	Stainless steel 316
Shipping Weight	4.5 kg
Color	Metal
Conduit Entry Size	2 x 1/2 inch NPT, M20X1.5
Approvals	
Performance Certification	FM3260
Hazardous area	Class I Division 1 Groups B,C and D Class II Division 1 Groups E,F and G Class III ATEX, Ex db IIB+H2 T5
Explosion proof Water and dust tight	IP66/67, NEMA Type 4X
Accessories	
Fire Simulator Bracket	TL 3000 BK-02



Highly Advanced Sensor & Optics

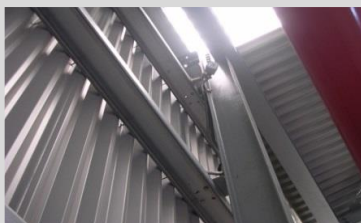
IR3 Flame Detector RFD-3000X

APPLICATION

Oil&Gas Plant

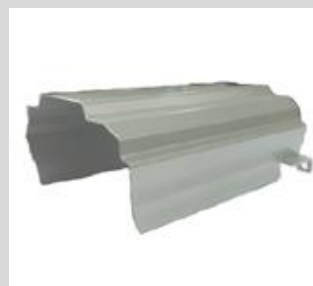


General Application



APPLICATION

Accessories



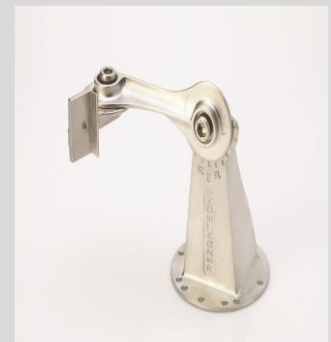
<Sun shield>



<Test Lamp_TL-3000>



<Air shield>



<Bracket_BK-2>

False Alarm Immunity Tech

